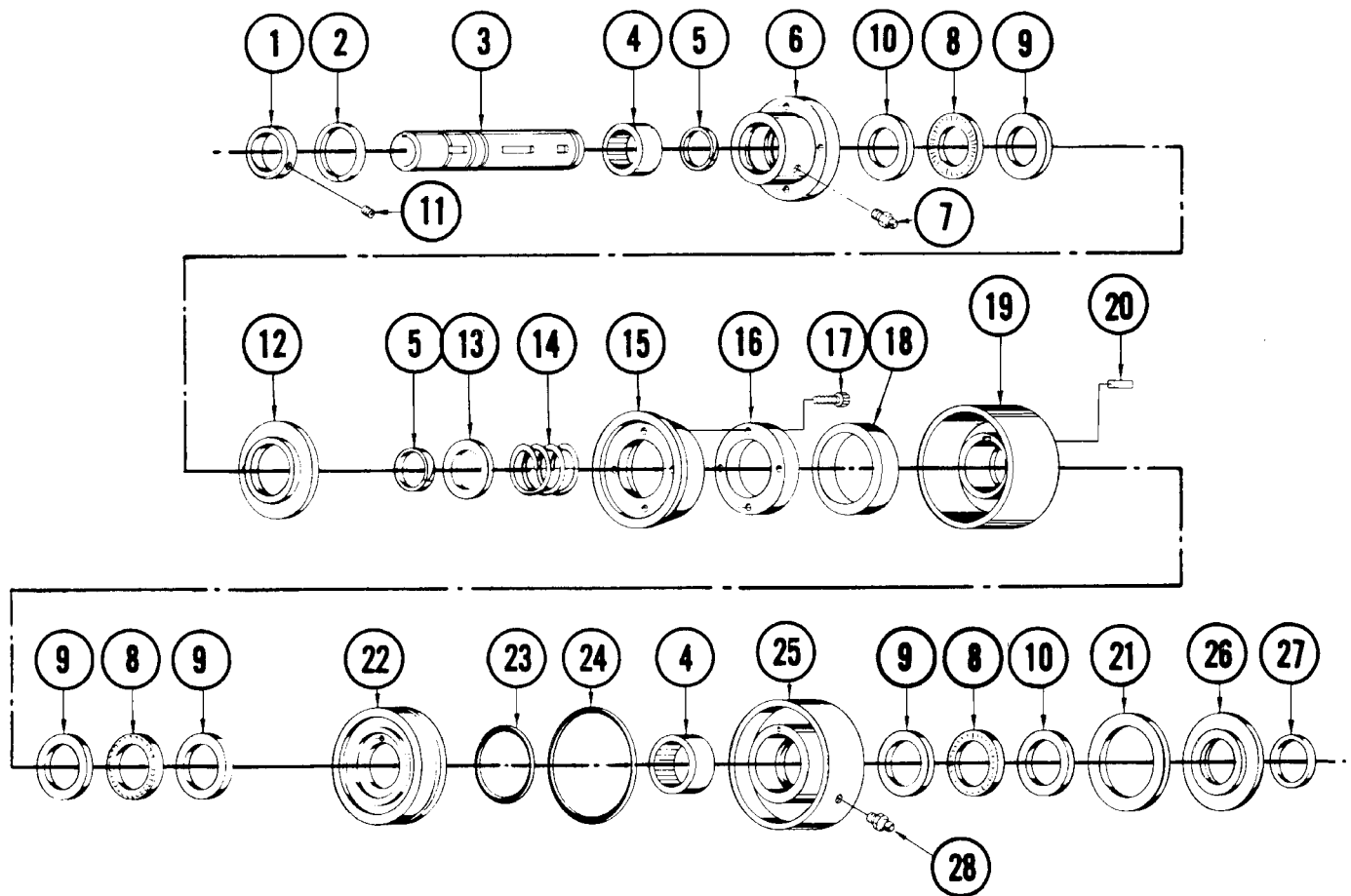


1308D Disc/Cone Clutch



Parts Listing

ITEM	PART NO.	DESCRIPTION	Quantity		
			1308-0310	1308-0312	1308-0314
1	1308-1008	Shaft Collar			1
2	1208-1016	Internal Retaining Ring	1	1	1
3	1208-1020	5/8" Bore Shaft	1		
	1208-1022	3/4" Bore Shaft		1	
	1208-1024	7/8" Bore Shaft			1
4	1308-1017	Needle Bearing	2	2	2
5	1001-1044	Retaining Ring	2	2	2
6	1208-1012	Adapter	1	1	1
7	2006-1056	Grease Fitting	1	1	1
8	0200-1220	Thrust Bearing	3	3	3
9	0200-1336	Thrust Race Washer	4	4	4
10	1308-2019	Thrust Race Washer	2	2	2
11	1308-1013	Set Screw	2	2	2
12	1208-1002	Cone Adapter	1	1	1
13	1208-1008	Washer	1	1	1

ITEM	PART NO.	DESCRIPTION	Quantity		
			1308-0310	1308-0312	1308-0314
14	1308-1069	Compression Spring	1	1	1
15	1208-1003	Cone	1	1	1
16	1208-1009	Ring Adapter	1	1	1
17	0707-1010	Soc. Hd. Cap Screw	4	4	4
18	1208-1011	Felt Seal	1	1	1
19	1308-2028	Cup	1	1	1
20	1308-1009	Kev	1	1	1
21	1208-1010	Felt Seal	1	1	1
22	1208-1005	Piston	1	1	1
23	1208-1014	O-Ring	1	1	1
24	1208-1015	O-Ring	1	1	1
25	1208-1006	Cylinder	1	1	1
26	1208-1007	Seal Adapter	1	1	1
27	1208-1060	External Retaining Ring	1	1	1
28	0100-1601	Grease Fitting	1	1	1

INSTALLATION

The Tolomatic Disc/Cone Clutch is as simple to install as a sprocket or sheave.

Simply slip the clutch over the shaft to the desired position, align with keyway and insert key (#20). After final alignment with mating sprocket or sheave, tighten set screws (#11) to lock clutch in place.

Connect air or hydraulic source not exceeding 100 psi (7 bars) pressure to cylinder port. Make sure no side or end thrust is transmitted to clutch. Flexible hose (**not plastic tubing**) may be used. A restraining member may be necessary to prevent cylinder rotation.

MAINTENANCE

Lubrication will be required after every four (4) weeks of operation. Use a lubricant such as Mobilith® SHC 460 or equivalent. Two zerk fittings are provided for this purpose.

After long periods of operation, it may be necessary to disassemble the clutch for cleaning and inspection.

⚠ CAUTION: CLUTCHES ARE UNDER SPRING TENSION. USE CARE WHEN DISASSEMBLING.

To disassemble, remove the retaining ring (#27) from the cylinder end of the clutch shaft and slide all parts off this end. Assemble all parts onto the shaft from the opposite end. This procedure is necessary to keep from damaging the edges of the bearing seal lips. See exploded view on the other side for proper sequence of assembly.

Wipe off all of the old lubricant before applying fresh grease. Use Mobilith® SHC 460 or equivalent. If it is necessary to remove the piston from the cylinder, re-lubricate the O-rings with a mineral-based O-ring grease.

Remove any grease that may have contacted the cone and clean out any foreign material in the cup. Be careful not to recontaminate any internal parts.

Mobilith® SHC 460 is a registered trademark of Exxon Mobil Corporation, www.mobil.com



3800 County Road 116, Hamel, MN 55340
<http://www.Tolomatic.com> • Email: Help@Tolomatic.com
Phone: (763) 478-8000 • Fax: (763) 478-8080 • Toll Free: 1-800-328-2174



Information furnished is believed to be accurate and reliable. However, Tolomatic assumes no responsibility for its use or for any errors that may appear in this document. Tolomatic reserves the right to change the design or operation of the equipment described herein and any associated motion products without notice. Information in this document is subject to change without notice.