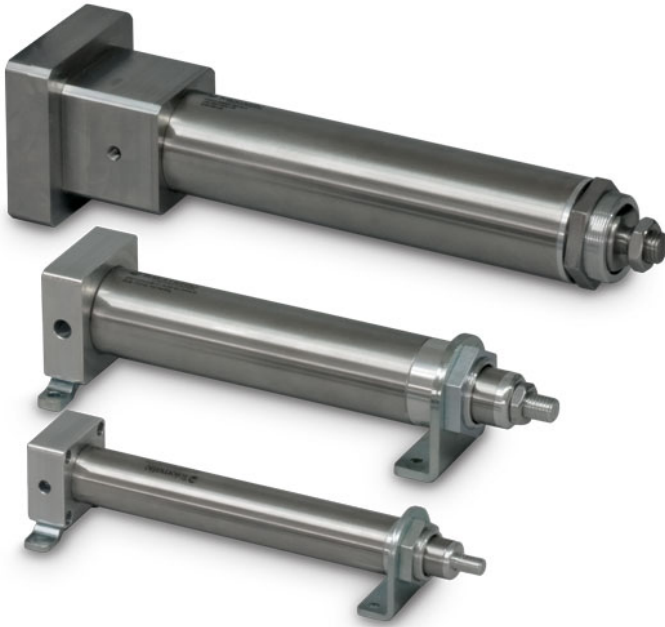


ERD Pneumatic Replacement Features



- 3 electric cylinder sizes with forces up to 500 lbf (2.2 kN)
- Economical solution for pneumatic replacement
- Ball and acme screw options
- Stroke lengths up to 24 inches (610 mm)
- Guide and anti-rotate options (static)
- 300 series stainless steel construction option
- IP67 and IP69K options (static)
- Stepper and servo motor & drive solutions with Ethernet
- Your Motor Here compatible