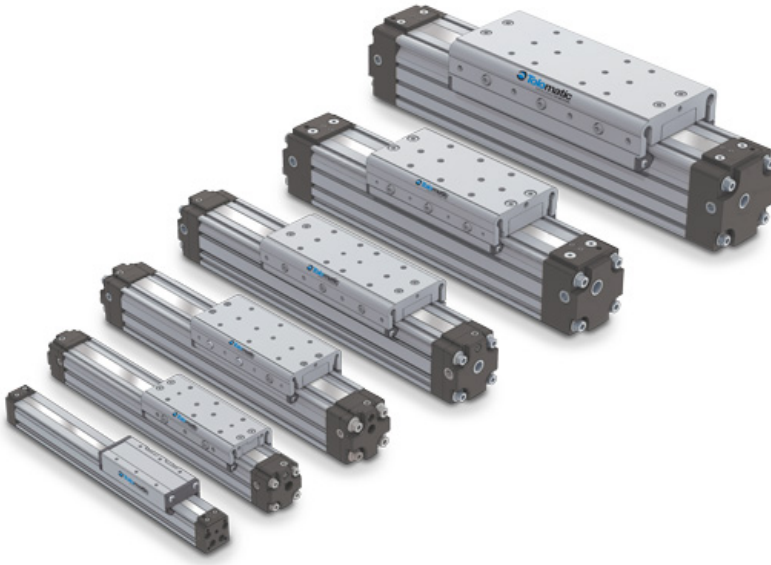


## MXP-S Features



- 6 Frame sizes with loads up to 520 lb (231 kg)
- Solid bearing for moderate load carrying and guidance requires no lubrication and is field replaceable
- Configurable stroke lengths up to 206 in (5,232 mm)
- Large carrier mounting pattern for more load stability and mounting flexibility
- Dual carrier option to increase load carrying and bending moment capacities
- Higher Mx moment capacity than the Tolomatic BC2 band cylinder